



**ELIX**  
PRODUCT INNOVATION SHOWCASE

1<sup>st</sup> July 2024

# HELIX

DESIGN THAT INSPIRES

Welcome to the world of Helix - a lifestyle brand committed to providing awe-inspiring hardware accessories that elevate your mood and enhance your living. Built with precision, our products are designed to surpass your expectations of performance and design.

With a humble beginning in 2009, with manufacturing of door-hinges, Helix soon evolved to be an entrusted brand for hardware accessories like mortise locks, aldrops, screws and telescopic channels. Our growth can be associated to our focus on precision, durability, functionality and user-friendliness.

Our dedicated research and development team makes sure that every product complies to our stringent technical and mechanical standards before hitting the shelves. Our design team is committed to providing world-class designs to accentuate your home. Over 400 skilled artisans, spread across four state-of-the-art manufacturing facilities, work hard to get the most innovative products in the market. We pride in introducing over 10 new products each year.

We are committed to enforcing the relationship between builders and home-users by offering trustworthy products that add value. Thus, we work closely with customers for continuous feedback and improvement. Our extensive network of Great numbers of dealers enables us to successfully share innovations and information throughout the country.

A result of years of research and development, our products are a genuine departure from any other hardware accessories in the market today. For those who demand the very best, our products will elevate your expectations.

## WHY US

- Well equipped R&D unit comprising of over ten technical and mechanical experts
- Ultra-modern conveyerised packaging line
- Four state-of-the-art manufacturing facilities
- Over ten new product releases every year
- Imported tool-room machinery
- Stringent laboratory testing of all raw materials
- Material assurance through composition testing
- Customer-centric service with seven-day resolution time
- High-quality products with precise balancing, alignment and fitment
- Highly durable and elegant finishes



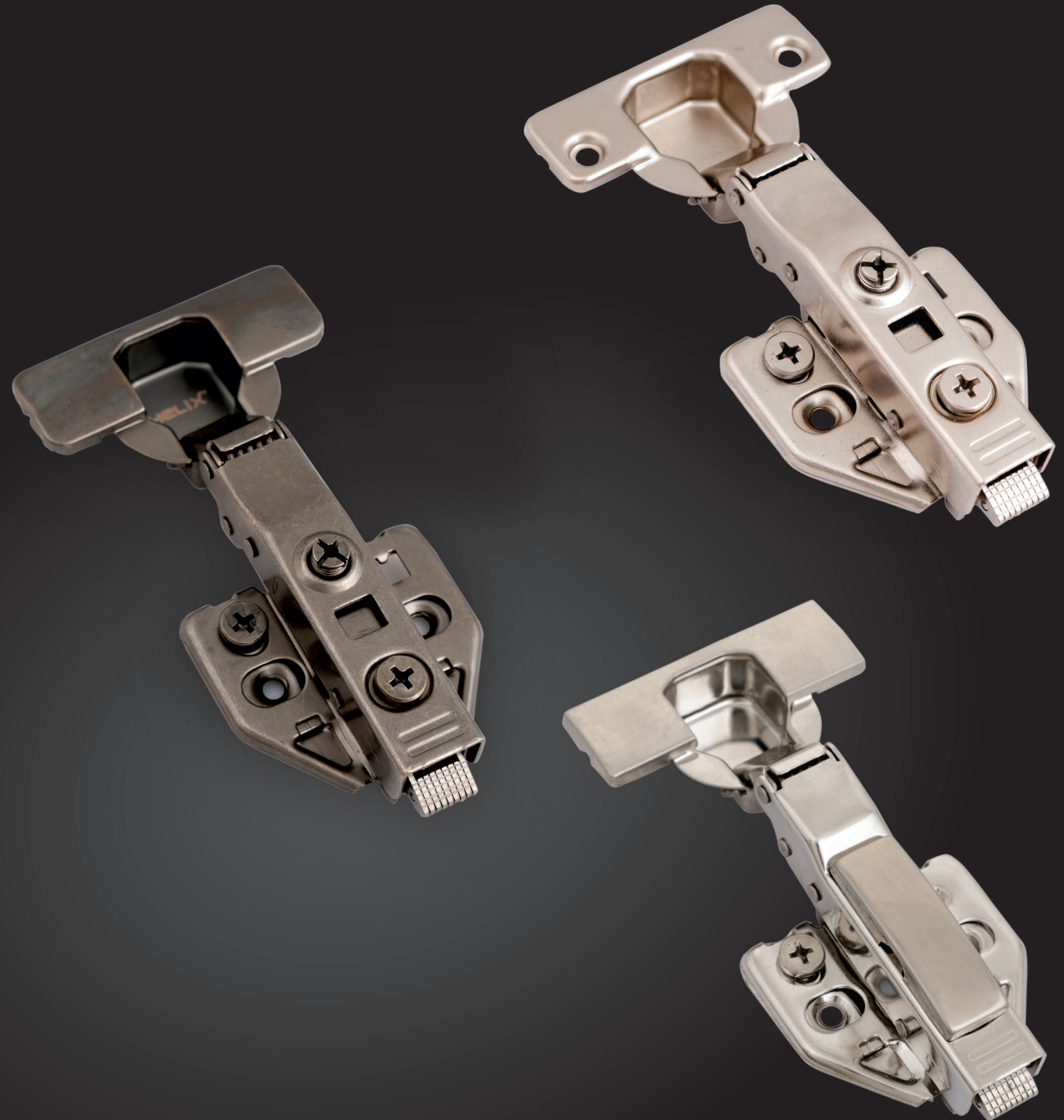
# TELESCOPIC CHANNEL

- 50kg Load Bearing Capacity
- Seven Years Warranty
- Two Ball Bearing
- Black And Zinc Finish
- High Precision A Grade Roller Gives Stable And Smooth Experience
- Big Nylon Lock For Better Grip



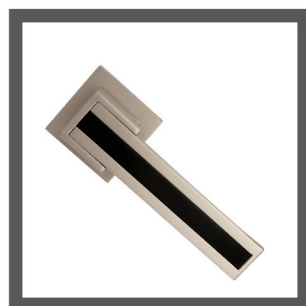
# HYDRAULIC CABINET HINGES

- Smooth and quiet hydraulic mechanism
- Clip-on design for easy installation
- Available in 3D and 2D alignment
- Made with lab tested raw materials

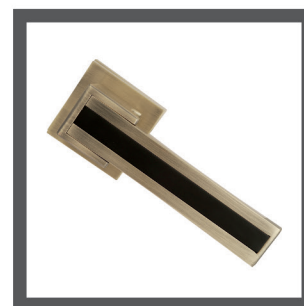


# FIASCO MORTISE HANDLE

Introducing the Fiasco Mortise Handle, elevate your doors with sophistication in S.S. Matt, Black Matt and opulent allure in PVD Rose Gold Finish.



Finish: Matt S.S. + Matt Black



Finish: Matt Antique + Matt Black

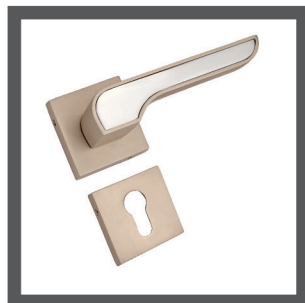


Finish: PVD Rose GOLD + PVD Black



# SAVVY

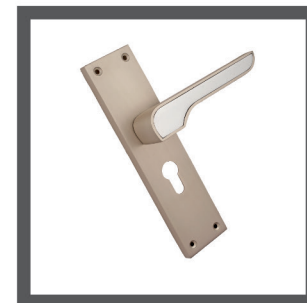
Introducing the Savvy Mortise Handle, elevate your doors with sophistication in Matt SS/CP, Matt AB/ Matt Black and opulent allure in Matt Grey/ Rose Gold Finish.



Finish: Matt SS/CP



Finish: Matt Grey / Rose Gold



Finish: Matt SS/CP



Finish: Matt AB / Matt Black



# VIRGO

Introducing the Virgo Mortise Handle, elevate your doors with sophistication in Matt SS/CP, Matt AB/ Matt Black and opulent allure in Matt Grey/ Rose Gold Finish.



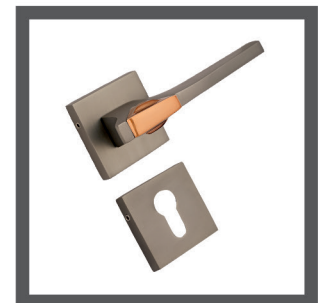
Finish: Matt AB / Matt Black



Finish: Matt SS/CP



Finish: Matt Grey / Rose Gold



Finish: Matt Grey / Rose Gold



# ZEPTO

Introducing the Zepto Mortise Handle, elevate your doors with sophistication in Matt SS, Matt AB, and Opulent allure in PVD Rose Gold Finish.





# GRACE

Introducing the Savvy Mortise Handle, elevate your doors with sophistication in Matt SS/CP, Matt AB/ Matt Black and opulent allure in Matt Grey/ Rose Gold Finish.





# Door **CLOSER** **HLX**

---

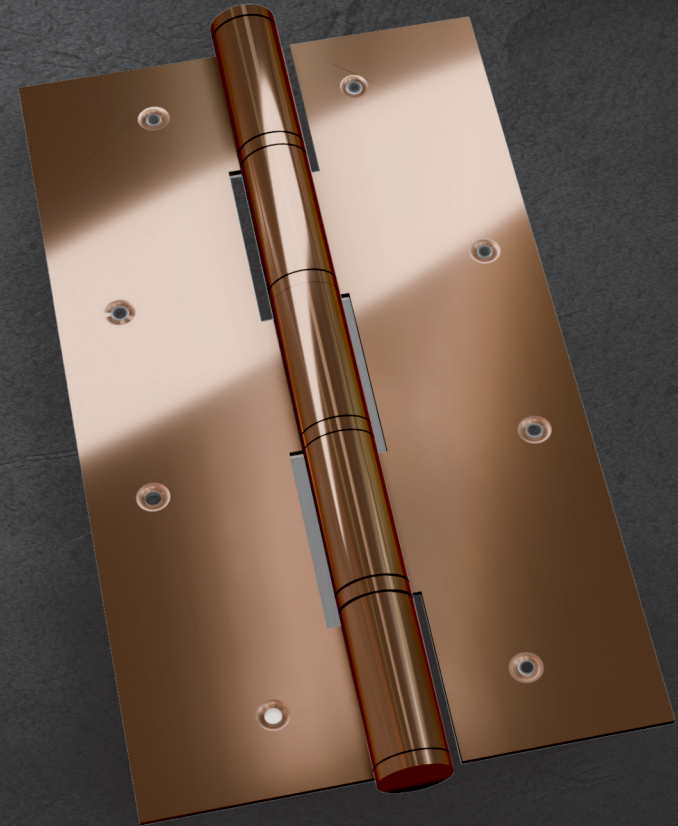
- Vast Range of Door Closers for different weight of Doors
- Weight of Door - 50kg to 110kg
- Available in Link arm and Track arm
- 500000 Cycle Tested
- Two years Guarantee





# PVD ROSE GOLD **HINGES**

Crafted with precision and elegance, our PVD Rose Gold hinges offer both durability and sophistication to elevate any project. Perfect for adding a touch of luxury to your designs, these hinges combine functionality with timeless beauty.

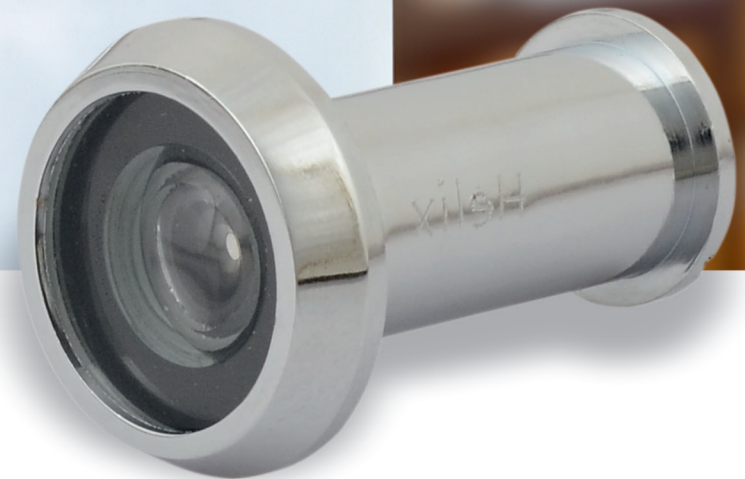


- **Durability:** One of the key factors in determining the quality of PVD rose gold hinges is their durability.
- **Finish Consistency:** Another important aspect of quality in PVD rose gold hinges is the consistency of the finish.
- **Precision Engineering:** Quality hinges should exhibit precision engineering in their design and construction.
- **Corrosion Resistance:** Since hinges are often exposed to moisture and other corrosive elements, corrosion resistance is crucial for maintaining the integrity and appearance of PVD rose gold hinges over time.



# STAINLESS STEEL **DOOR EYE**

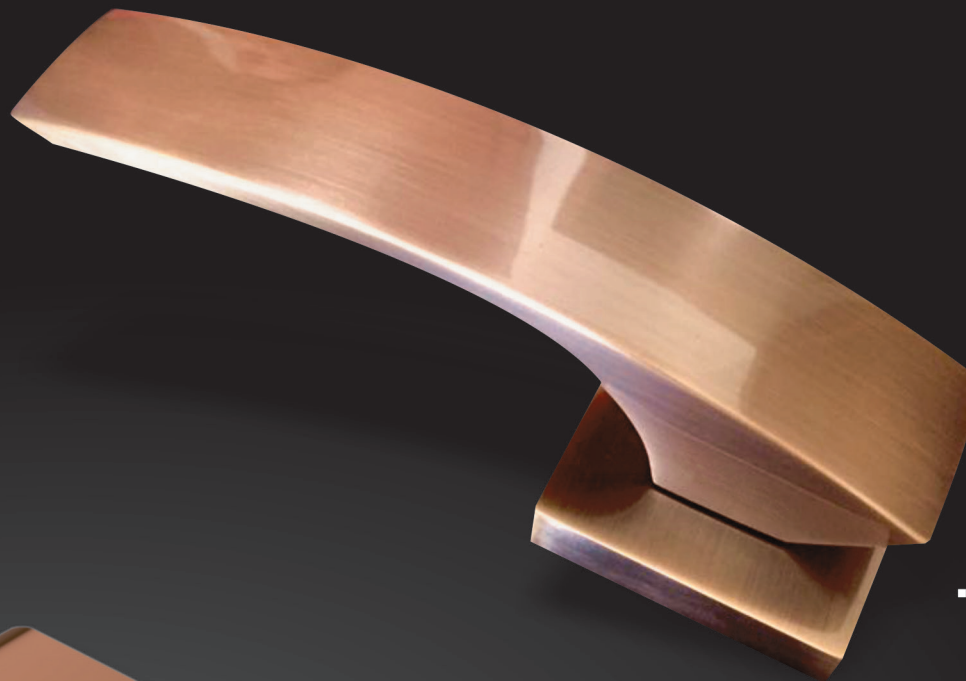
Durable stainless steel door eye provides enhanced security and durability. Its sleek design ensures reliable surveillance without compromising aesthetics.



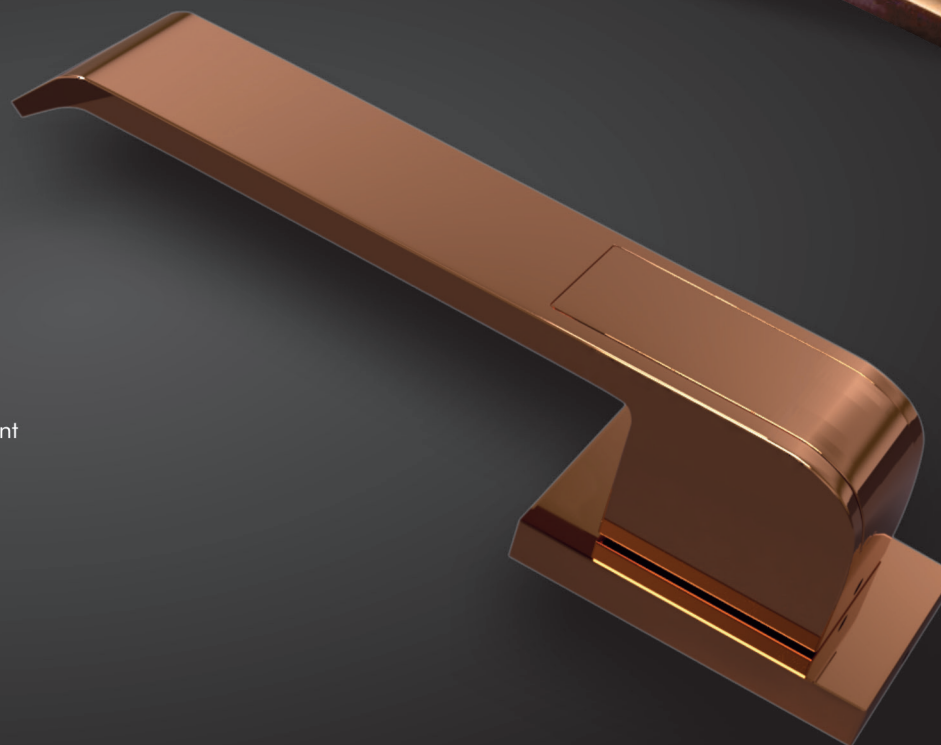
# PVD FINISH WITH LIFETIME WARRANTY

The highest quality thin-film coating  
with unmatched durability

- Four times harder than chrome makes it scratch resistant
- No clear top coat that degrades or corrodes with time
- Lifetime protection from daily usage and cleaning
- Does not chip, tarnish or fade
- Uniform coating
- Superior chemical resistance
- Excellent adhesion
- Low maintenance



▪ Rose Gold



▪ Desire Rose Gold

HELIX

■ PREMIUM SERIES

# WAVY

MORTISE HANDLE

Model: Lx01

Material: Zinc Alloy

Finish: SS/CP/Antique Brass

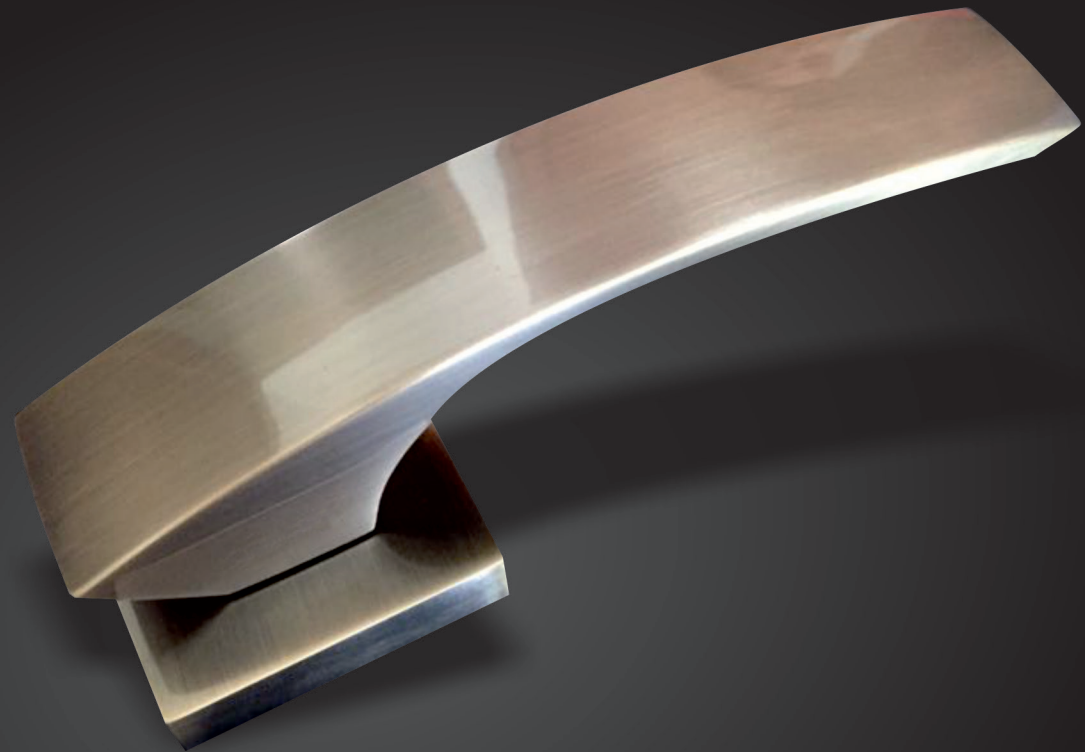
Available in:

**Rose Handle Set**

**Rose Combo Set with Lock Body & Cylinder**

**Plate Combo Set with Lock Body & Cylinder**

**T**his heavy-duty handle is inspired by the boldness and the strength of waves in the ocean. Yet, its design reeks of beauty and calm as the ocean viewed from a distance. Bring home this elegant masterpiece.



HELIX<sup>®</sup>



**HELIX**<sup>®</sup>



DESIGN  
THAT  
INSPIRES

*Wavy*

MAIN DOOR HANDLES

- S.S. Finish
- Matt S.S.
- Matt Antique
- PVD Rose Gold

- Perfect Grip
- Aesthetic Design (HEAVY)
- Electrophoretic Lacquer
- Lab Tested Zinc Alloy



S.S.



MATT S.S.



MATT ANTIQUE



PVD  
ROSE GOLD

[www.helixhandles.com](http://www.helixhandles.com)



HELIX

# THE BELLA DOOR HANDLE

Elevate your door aesthetics with our Bella Handle, available in a variety of stunning finishes.



Finish: S.S. + C.P.



Finish: Satan Black + PVD Rose Gold



Finish: Matt Antique + PVD Gold

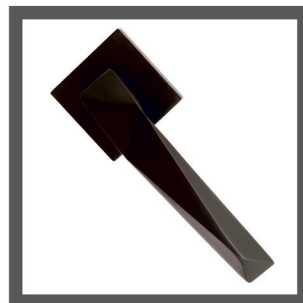


Finish: Black Matt



# ZIGGY DOOR HANDLE

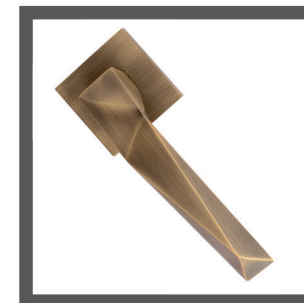
Meet ziggy, the epitome of door handles finishes. Choose from our exquisite range of finishes- Matt Black, PVD Rose Gold, Matt S.S. and Matt Antique.



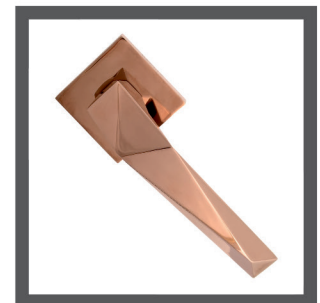
Finish: Matt Black



Finish: Matt S.S.



Finish: Matt Antique



Finish: PVD Rose GOLD



HELIX

ECONOMY SERIES

# JOY

MORTISE HANDLE

Model: Lx02

Material: Zinc Alloy

Finish: SS/CP/Antique Brass

Available in:

**Rose Handle Set**

**Rose Combo Set with Lock Body & Cylinder**

**Plate Combo Set with Lock Body & Cylinder**

**N**ot much needs to be spoken about this design. Its simplicity, functionality and ergonomics speak volumes. A perfect handle for those who find joy in simple things in life.



HELIX





DESIGN THAT INSPIRES

---

ECOTECH SERIES

- Excellent Quality
- Affordable Rates
- Electrophoretic Lacquer
- Lab Tested Zinc Alloy & Stainless Steel
- One Lac Cycle Tested

Steelo



Solo





# BLISS AND ORA

Stainless Steel Mortice Handles

## ■ BLISS



## ■ ORA



- 150000 Cycle Tested.
- Electrophoretic Laquer.
- Lab Tested Material.
- Joint Less Handle.

Web.: [info@helixhandles.com](mailto:info@helixhandles.com) . [helixhandles.com](http://helixhandles.com)



HELIX

 SIGNATURE SERIES

# DESIRE

MORTISE HANDLE

Model: Lx05

Material: Zinc Alloy

Finish: SS/CP/Antique Brass

Available in:

Rose Handle Set

Rose Combo Set with Lock Body & Cylinder

**D**esire is a reckoner of our incessant desire for beauty. Its free-flowing form, combined with elegant detail in brushed finish, makes it a must-have for all those who crave beautiful things.



 HELIX

HELIX

■ PREMIUM SERIES

# DELIGHT

MORTISE HANDLE

Model: Lx07

Material: Zinc Alloy

Finish: SS/CP/Antique Brass

Available in:

**Rose Handle Set**

**Rose Combo Set with Lock Body & Cylinder**

**Plate Combo Set with Lock Body & Cylinder**

After a long day's work, this piece of art is a brilliant way to be welcomed back home. Delight, with its enthralling design and hassle-free operation, will make using your door a pleasurable experience. Get delighted at every step.



HELIX<sup>®</sup>



HELIX

■ PREMIUM SERIES

# FLUIDIC

MORTISE HANDLE

Model: Lx03

Material: Zinc Alloy

Finish: SS/CP/Antique Brass

Available in:

**Rose Handle Set**

**Rose Combo Set with Lock Body & Cylinder**

**Plate Combo Set with Lock Body & Cylinder**

The quality of imagination is to flow and not to freeze. Fluidic's design language is that of endless possibilities. Making turning of the handle feel snug to your hand, it will be a joy for you and your visitors to handle this handle.

HELIX®





HELIX

■ PREMIUM SERIES

# MISTY

MORTISE HANDLE

Model: Lx08

Material: Zinc Alloy

Finish: SS/CP/Antique Brass

Available in:

**Rose Handle Set**

**Rose Combo Set with Lock Body & Cylinder**

**Plate Combo Set with Lock Body & Cylinder**

**T**he beauty of Divine is in the way it turns. It is dramatic and effortless, and makes a great style statement. Upscale your home with Divine and give it the pampering it deserves.



HELIX®



HELIX

PREMIUM SERIES

# RADIANT

MORTISE HANDLE

Model: Lx11

Material: Zinc Alloy

Finish: SS/CP/Antique Brass

Available in:

**Rose Handle Set**

**Rose Combo Set with Lock Body & Cylinder**

**Plate Combo Set with Lock Body & Cylinder**

When it comes to Radiant, not much needs to be spoken as its design is worth a thousand words. Witness it, fall in love with it and take it home.



6" Special Rose Cylinder



8" Plate Cylinder



8" Plate Key



8" Privacy Plate



10" Plate Cylinder



On Rose

HELIX

# ALL MORTISE HANDLE AVAILABLE IN LOW HEIGHT



Radiant



Savvy



Fiasco



Virgo



Joy



Grace



Misty



Zepto

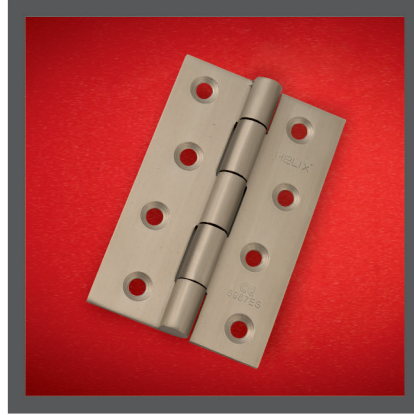
HELIX<sup>®</sup>



# TOP QUALITY HINGES



Finish: Black Matt  
Item : Welded Hinges



Finish: Lacquer(Matt SS)  
Item : Welded Hinges



Finish: Matt Antique  
Item : Welded Hinges



Finish: PVD Rose Gold  
Item : Pin Hinges



HELIX

# HINGES

Material: J7/J4 & 304 Grade | Finish: SS



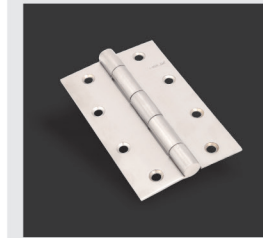
## FEATURES

- Flawless alignment with no play and no gaps on barrel
- Ultra-smooth movement
- Impeccably smooth finish with automatic buffing
- Coil maintains exact and full thickness
- 304-grade bearings and hinges
- Blister packing in 304-grade
- Perfectly aligned with high-quality milling
- Flat ball-bearing and flat pin



### Butt Hinge

Size: 3x16, 3x14, 3x12, 4x10, 4x14, 4x12, 4x12 Heavy, 5x10, 5x14, 5x12, 5x12 Heavy 6x12



### Welding



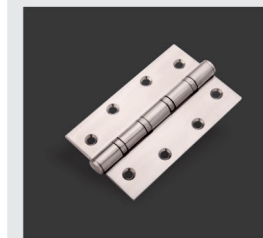
### Butt (Cut)

3x1/2x3/4, 3x3/4x3/4, 3x1/2x, 3x1x1, 3x3/8x5/8, 3x5/8x5/8, 3xassamcut, 2.5xassamcut, 4x1/2x3/4, 4x3/4x3/4, 65x19x19, 3x1/2x1.5



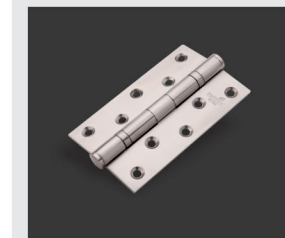
### L Hinge

Size: 13x6, 13x13, 13x19



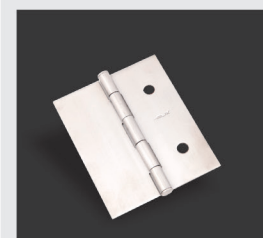
### 4 Ball Bearing

Size: 3"x2.5"x2.5", 4x3x2.5, 4x3x3, 5x3x2.5, 5x3x3, 6x3x3



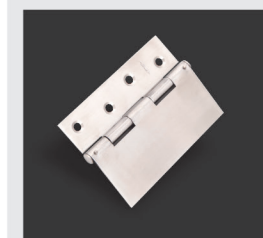
### 2 Ball Bearing

Size: 3"x2.5"x2.5", 4x3x2.5, 4x3x3, 5x3x2.5, 5x3x3, 6x3x3



### Stone

Size: 25x38, 36x36



### Stone Double Flap

Size: 25x38, 36x36



# MAKE YOUR DOOR MORE STYLISH

Item: Polo  
Finish: Black Matt



Item: Fusion Aldrop  
Finish: SS / CP



Item: Fusion Aldrop  
Finish: Matt Antique



Item: Fusion Aldrop  
Finish: Matt Antique / Matt Black



Experience the Fusion of strength and style without Stainless Steel Argon welded Aldrop. Available in a range of exquisite finisshes.



WELDED/CONCEALED

ALDROPS FOR  
UNMATCHED  
SECURITY

Only with Helix



- Jointless straight section
- Perfectly aligned
- Hammer tested for unparalleled reliability
- Highly durable and elegant finish
- Mix of stainless steel matt and bright finishes

HELIX®

HELIX

## ALDROPS

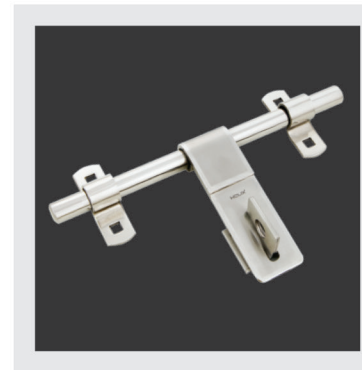
Material: J7/J4 & 304 Grade | Finish: SS & Two Tone

Rod length: 8", 10", 12", 14" | Rod Dia: 14mm, 16mm

Available in: Sheet Clamp & Bracket, Casting Clamp & Bracket



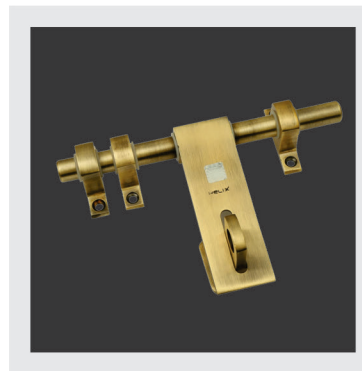
Matka



Straight



Silky



Polo



Perky



All models also available  
with Casting Clamp &  
Bracket



HELIX

## TOWER BOLTS & BABY LATCHES

Material: J7/J4 & 304 Grade | Finish: SS & Two Tone



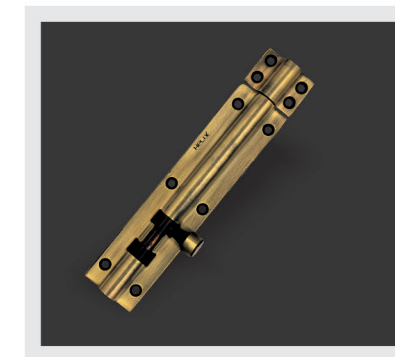
**Pentagon**

Sizes: 4", 6", 8", 10", 12"



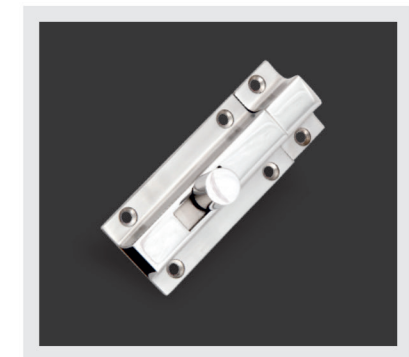
**Square**

Sizes: 4", 6", 8", 10", 12"



**Half Round**

Sizes: 4", 6", 8", 10", 12"



**Baby Latch**

Sizes: 3", 4"

### FEATURES

- Single-piece sections
- Superior knob design
- Progressively controlled movement on each step
- Perfectly riveted knob



**HELIX<sup>®</sup>**

# 12MM TOWER BOLT

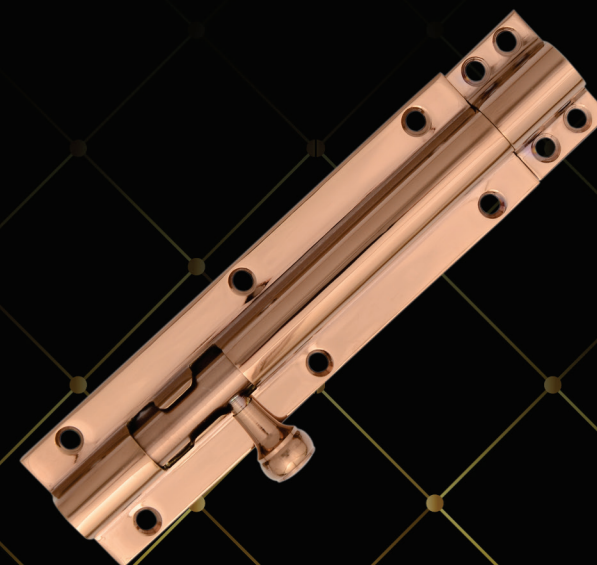
Half Round

■ Silent -X Series  
**NOISELESS**

**Matt Antique**



**PVD Rose Gold**



**S.S**



- Noiseless towerbolt.
- Ultra smooth movement.
- Heavy Design and knob.
- Single piece section

# STOP THE UNSTOPPABLE

with Casting Door Stopper

**HELIX<sup>®</sup>**

- Ultra heavy design
- Step wise movement
- Double spring and double ball technology
- Five year warranty
- Lab tested virgin material used



Finish: Antique



Finish: PVD Rose Gold



Finish: S.S.



Finish: Black Matt





# MEGA BOLT

## MEGA BOLT OSK WITH FOUR ULTRA KEYS

- S.S. Finish
- Antique Finish



## MEGA BOLT BSK WITH FOUR ULTRA KEYS

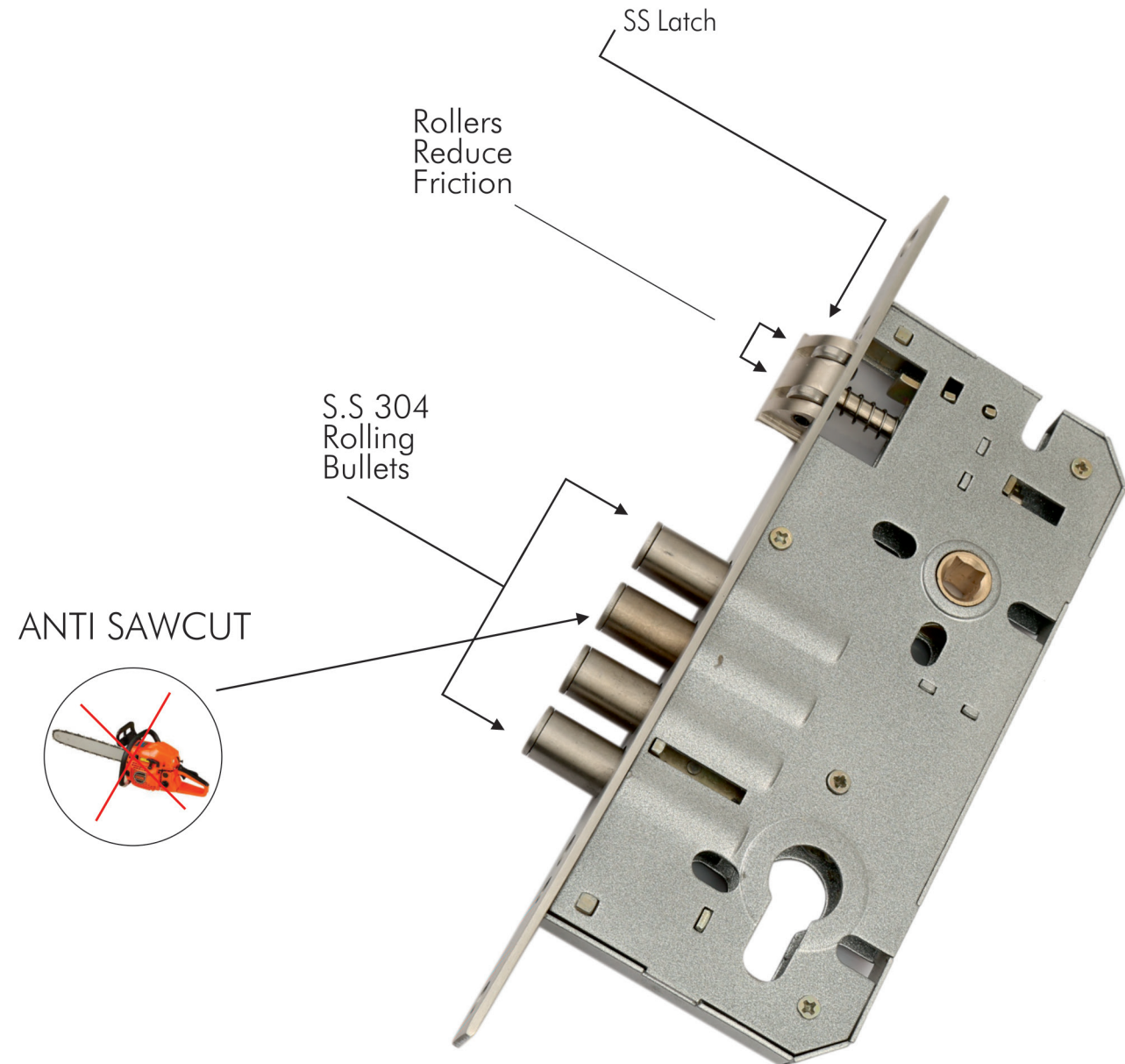
- S.S. Finish
- Antique Finish



- Mega Bolt with Ultra Key
- Load Bearing Capacity 5 Ton
- With four alloy bolt and four ultra keys.
- Suitable for 30mm to 70mm door thickness.
- 20mm Dia Heavy Bullets.



# ROLLING BULLET LOCK BODY



HELIX

## LOCK BODIES

More than 5 lakh cycles tested

Finish: SS/Antique Brass



**Solid Dead Bolt**  
60mm  
Material: SS Clamp & Brass Dead Bolt



**Solid Brass Dead Bolt - 85mm**  
Material: SS Clamp & Brass Dead Bolt



**Baby Latch**  
Material: SS Clamp & Brass Dead Bolt



**Economy Lock Body**  
60mm & 85mm with small key cylinder  
Material: SS Clamp & Zinc Alloy Dead Bolt



**Key Lock Body**  
Material: SS Clamp & Brass Dead Bolt



**Dead Lock**  
Material: SS Clamp & Brass Dead Bolt



**Hardend Iron Bullets**  
85mm



**4 Brass Square Bullets**  
85mm



**Twisting Bullet Lock Body**



**Rolling Bullet Lock Body**

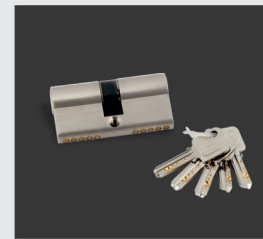
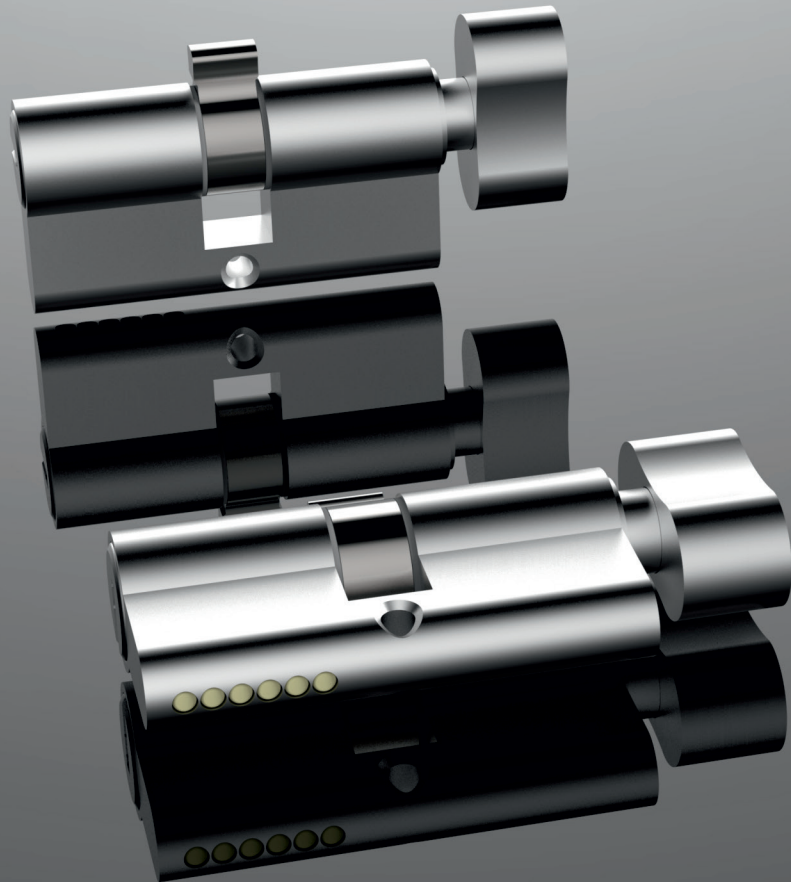


HELIX

## CYLINDERS

Material: Solid Brass | Finish: SS/Antique Brass

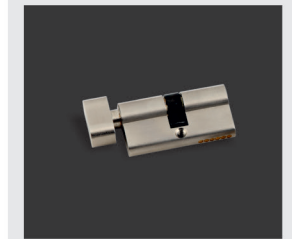
Available in: 3 Regular Key, 5 Computer Key | Size: 60mm, 70mm, 80mm, 90mm, 100mm



Both Side Key  
5 Keys



One Side Key & One  
Side Knob  
5 Keys



Keyless



Both Side Key  
3 Keys



One Side Key & One Side  
Knob  
3 Keys



HC Cylinder  
Half

### FEATURES

- More than 1,000 combinations

HELIX®

# CUP BOARD LOCKS

- Mini Cup Board Lock (Ultra) 21mm
- Multi Purpose Lock (Lever)
- Cup Board Lock (Ultra) 25mm (8 PIN)
- Cup Board Lock (Ultra) 32mm (8 PIN)





# STAINLESS STEEL **DOOR HANDLE**

Elevate your door aesthetics with our Stainless steel door handle, available in a stunning a range of single and one combination finishes.



Finish: Matt Black  
Item : 6" D Handle



Finish: SS/CP Finish  
Item : 8" Curo Handle



Finish: Matt Antique  
Item : 8" Curo Handle



Finish: Matt Antique + Black Matt  
Item : 8" Curo Handle



HELIX

# STAINLESS STEEL **SILKY** **HANDLE**

Elevate your door aesthetics with our Stainless steel door handle, available in a stunning a range of single and one combination finishes.



HELIX®



HELIX

## DOOR HANDLES

Material: J7/J4 & 304 Grade | Finish: SS & Two Tone



**Round Plate**  
Size: 6" & 8"



**Square Plate**  
Size: 6" & 8"



**Silky**  
Size: 5", 6", 8", 10" & 12"



**D Handle**  
Size: 5" 6" & 8"

HELIX

## LATCHES

Material: J7/J4 & 304 Grade | Finish: SS & Two Tone

Rod length: 8", 10", 12" | Rod Dia: 12mm

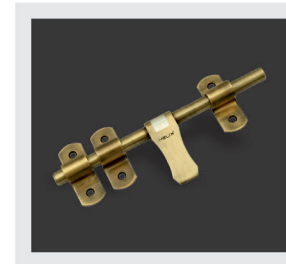
Available in: Sheet Clamp & Bracket, Casting Clamp & Bracket



Matka



Silky



Matka Antique Finish





# SILENCER **CYLINDRICAL DOOR SILENCER**

Quiet doors, peace for spaces. Introducing our Door silencer in black finish. Enjoy the serenity of your surroundings without the noise of slamming doors.



HELIX

# STOPPERS | SILENCERS GATEHOOKS | CATCHERS

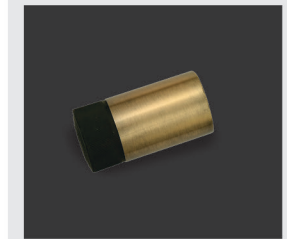
Finish: SS/Antique Brass



**Round Door Silencer**  
Size: 3"  
Material: J7/J4



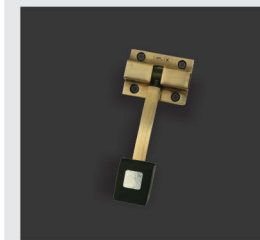
**Square Door Silencer**  
Size: 3"  
Material: J7/J4



**Door Silencer**  
Size: 3"  
Material: J7/J4



**Magnetic Catcher**  
Material: Virgin ABS



**Single Door Stopper**  
Size: 2x12mm  
Material: J7/J4 & 304 Grade



**Double Door Stopper**  
Size: 2.5x10mm  
Material: J7/J4 & 304 Grade



**Square Gate Hook**  
Size: 4", 5" & 6"  
Material: J7/J4



**Round Gate Hook**  
Size: 4", 5" & 6"  
Material: J7/J4

## FEATURES

### Door Stopper

- Highly durable flexible rubber
- Single-piece section
- Progressively controlled movement on each step

### Door Catcher

- Made with virgin ABS
- High-power magnet

### Gate Hooks

- Superior bend profile



**Head Office:** 235, Surya Niketan, Delhi - 110092  
**Unit No. 1:** B-28, Sec. A5/6, Tronica City, U.P.-201102  
**Unit No. 2:** E-110, Sec. A7, Tronica City, U.P.-201102  
**Toll Free No:** 9953926668  
**Website:** [www.helixhandles.com](http://www.helixhandles.com)  
**Email:** [info@helixhandles.com](mailto:info@helixhandles.com)

